



creative
MATTERS

INSPIRED WALL & FLOOR COVERINGS

ART DAY

A SPIRITED FLOORCOVERING COLLECTION

ART DAY

A close-up photograph of a dark, textured object, possibly a piece of wood or a branch, resting on a surface with a blue and white pattern. The text "ART DAY" is overlaid in a light blue, sans-serif font. The background is a blurred pattern of blue and white, suggesting a piece of fabric or paper with a geometric or abstract design. The lighting is soft, creating a moody atmosphere.

**Eclectic and well-considered,
looks both polished and
unrestricted, artisanal
construction champions
contemporary design.**

A collection derived from the many Art Day workshops that preceded it. Hand-painted and hand-drawn elements with digital transformation. Twelve fascinating designs and colourways that feature a variety of markings, colours, textures and line work.



Art Day. A concert of ideas, media and inspiration. A time-honoured practice to contemplate form and colour. To engage with the process. The synchronicity, synergy and symbiosis of pure design.





#40 - DARK

SIZE: 8' x 10', 9' x 12', 10' x 14', 12' x 15'

DETAIL: Handknotted, fine Tibetan wool with pure Chinese silk, 100 knot, 4mm cut pile construction. Made in Nepal.

SILK CONTENT: 23%

CUSTOM COLOURS AND SIZES AVAILABLE





#40 - LIGHT

SIZE: 8' x 10', 9' x 12', 10' x 14', 12' x 15'

DETAIL: Handknotted, fine Tibetan wool with pure Chinese silk, 100 knot, 4mm cut pile construction. Made in Nepal.

SILK CONTENT: 23%

CUSTOM COLOURS AND SIZES AVAILABLE





#68 - PLATINUM

SIZE: 8' x 10', 9' x 12', 10' x 14', 12' x 15'

DETAIL: Handknotted, fine Tibetan wool with pure Chinese silk, 100 knot, 4mm cut pile construction. Made in Nepal.

SILK CONTENT: 25%

CUSTOM COLOURS AND SIZES AVAILABLE





#68 - VIBRANT

SIZE: 8' x 10', 9' x 12', 10' x 14', 12' x 15'

DETAIL: Handknotted, fine Tibetan wool with pure Chinese silk, 100 knot, 4mm cut pile construction. Made in Nepal.

SILK CONTENT: 25%

CUSTOM COLOURS AND SIZES AVAILABLE





#74 - SEPIA

SIZE: 8' x 10', 9' x 12', 10' x 14', 12' x 15'

DETAIL: Handknotted, fine Tibetan wool with pure Chinese silk, 100 knot, 4mm cut pile construction. Made in Nepal.

SILK CONTENT: 23%

CUSTOM COLOURS AND SIZES AVAILABLE





#74 - FROST

SIZE: 8' x 10', 9' x 12', 10' x 14', 12' x 15'

DETAIL: Handknotted, fine Tibetan wool with pure Chinese silk, 100 knot, 4mm cut pile construction. Made in Nepal.

SILK CONTENT: 23%

CUSTOM COLOURS AND SIZES AVAILABLE





#638 - FAWN

SIZE: 8' x 10', 9' x 12', 10' x 14', 12' x 15'

DETAIL: Handknotted, fine Tibetan wool with pure Chinese silk, 100 knot, 4mm cut pile construction. Made in Nepal.

SILK CONTENT: 14%

CUSTOM COLOURS AND SIZES AVAILABLE





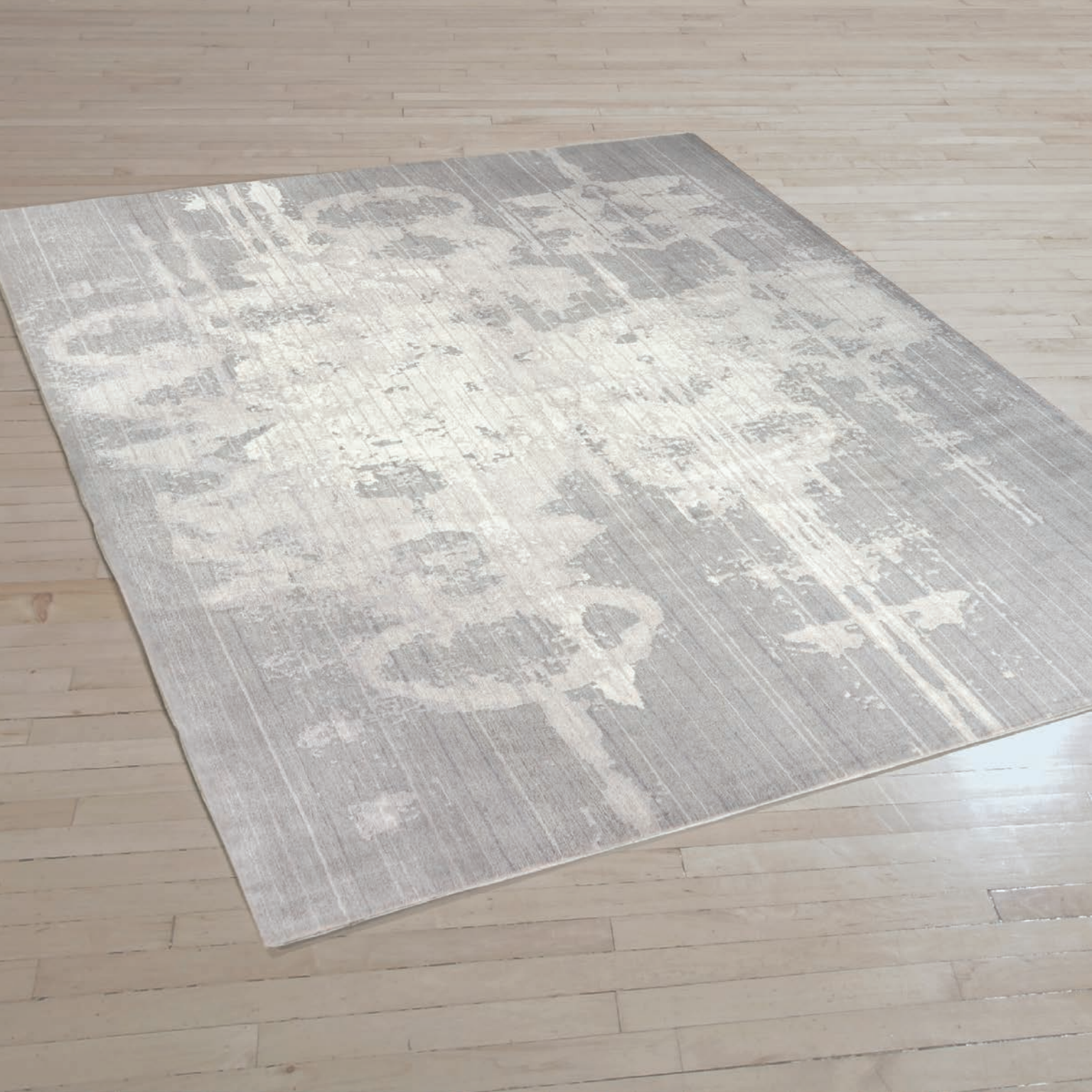
#701 - FROST

SIZE: 8' x 10', 9' x 12', 10' x 14', 12' x 15'

DETAIL: Handknotted, fine Tibetan wool with pure Chinese silk, 100 knot, 4mm cut pile construction. Made in Nepal.

SILK CONTENT: 38%

CUSTOM COLOURS AND SIZES AVAILABLE





#123 - PLATINUM

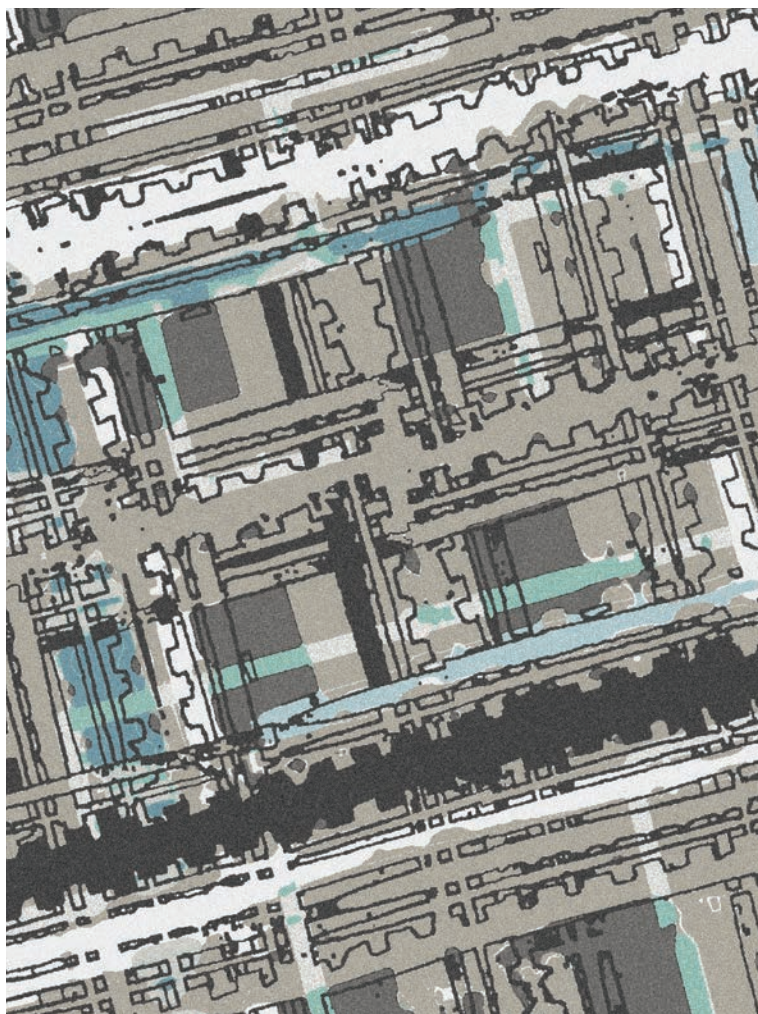
SIZE: 8' x 10', 9' x 12', 10' x 14', 12' x 15'

DETAIL: Handknotted, fine Tibetan wool with pure Chinese silk, 100 knot, 4mm cut pile construction. Made in Nepal.

SILK CONTENT: 14%

CUSTOM COLOURS AND SIZES AVAILABLE





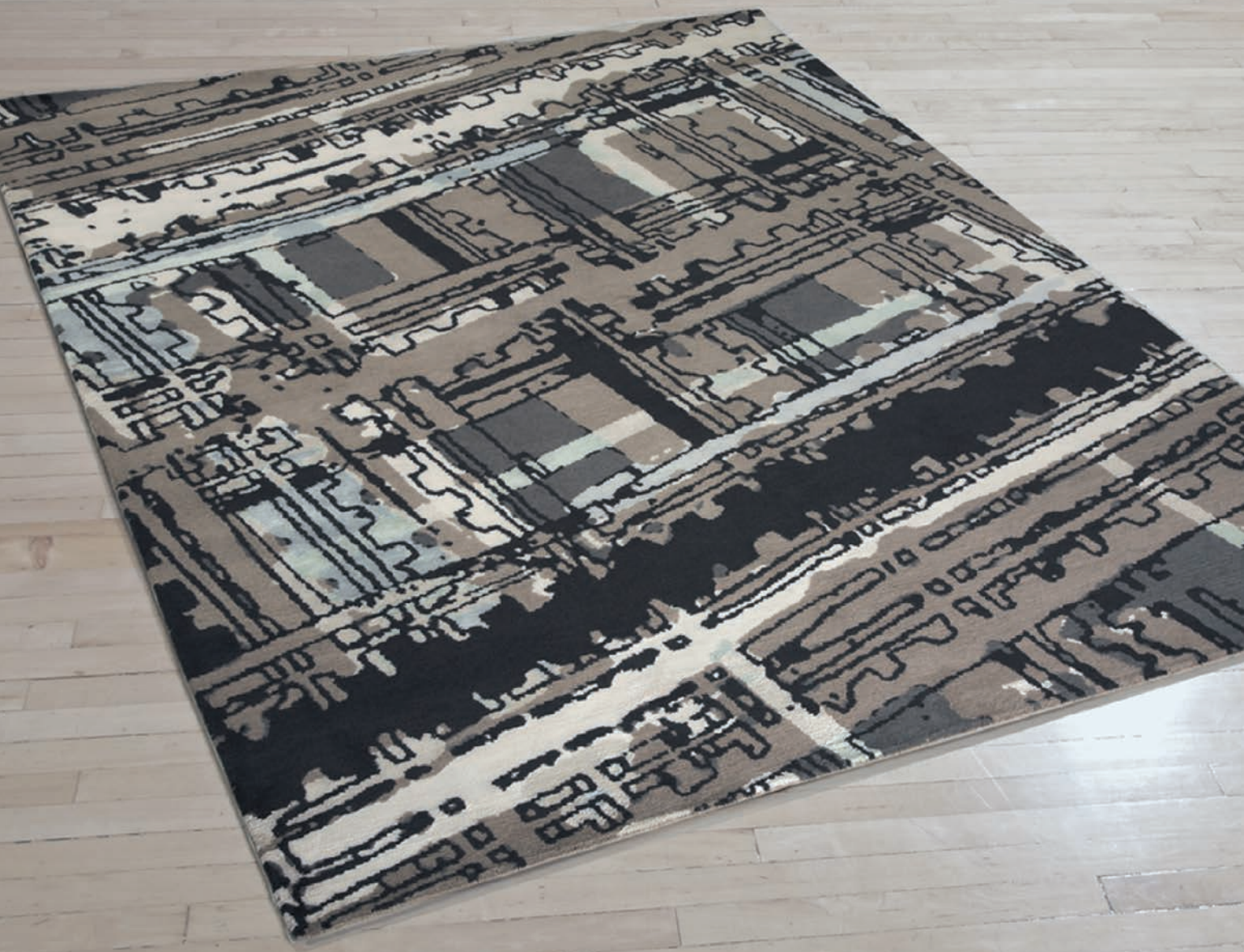
#396 - BOARDWALK

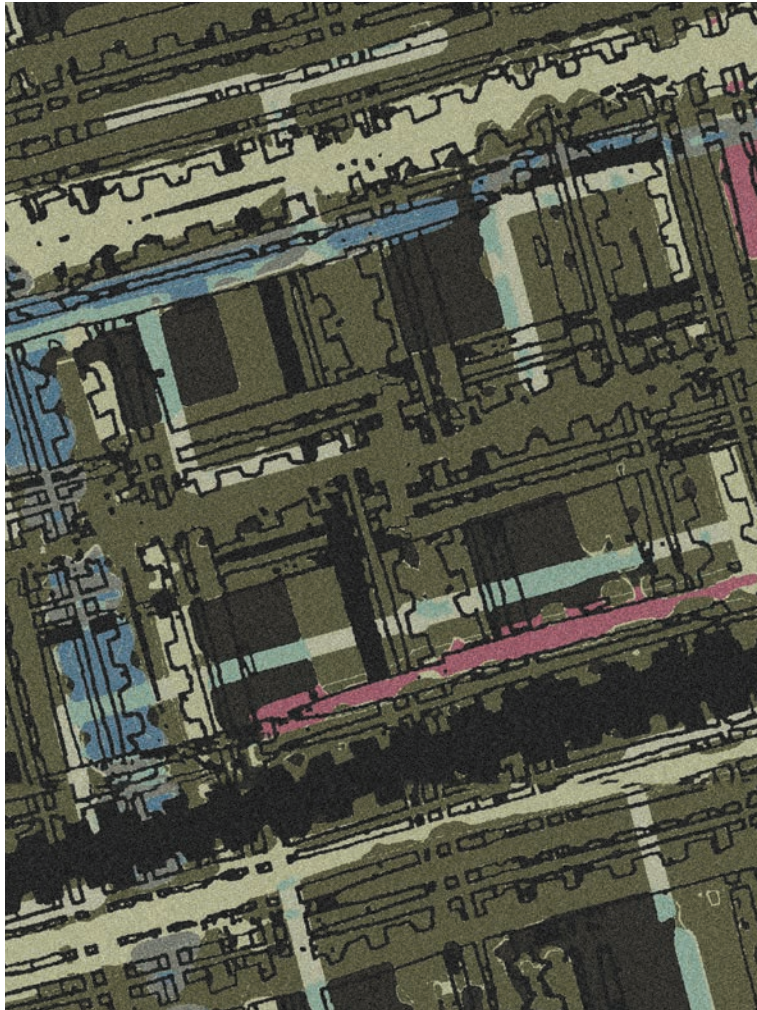
SIZE: 8' x 10', 9' x 12', 10' x 14', 12' x 15'

DETAIL: Handknotted, fine Tibetan wool with pure Chinese silk, 100 knot, 4mm cut pile construction. Made in Nepal.

SILK CONTENT: 30%

CUSTOM COLOURS AND SIZES AVAILABLE





#396 - URBAN

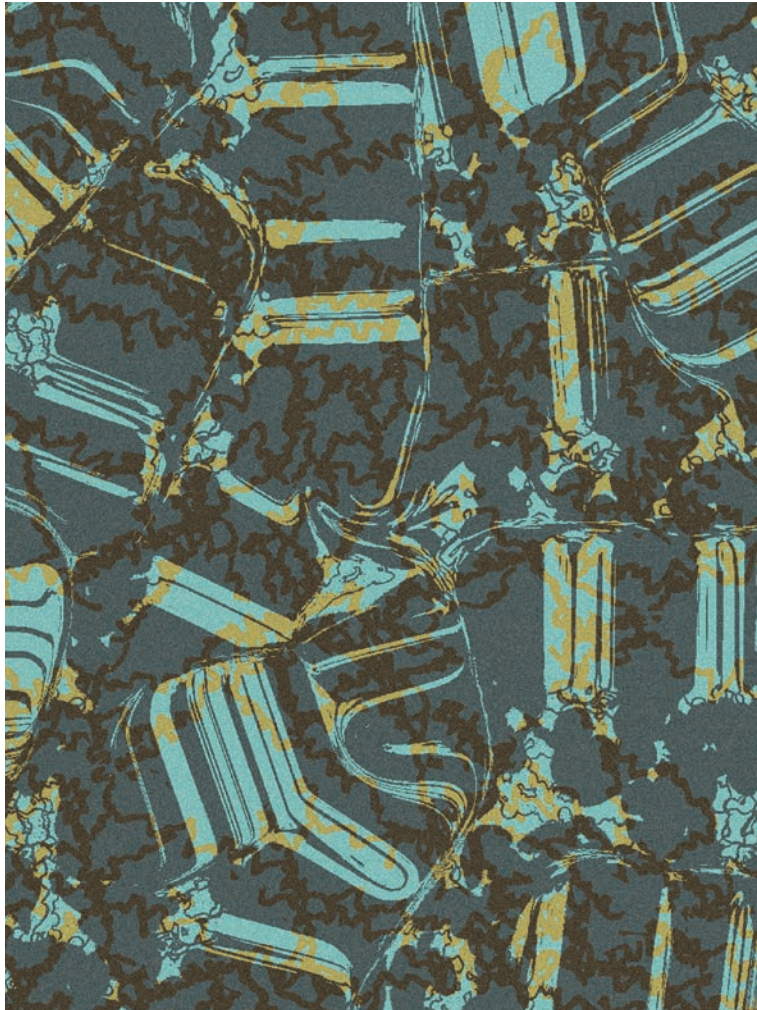
SIZE: 8' x 10', 9' x 12', 10' x 14', 12' x 15'

DETAIL: Handknotted, fine Tibetan wool with pure Chinese silk, 100 knot, 4mm cut pile construction. Made in Nepal.

SILK CONTENT: 30%

CUSTOM COLOURS AND SIZES AVAILABLE





#546 - MALACHITE

SIZE: 8' x 10', 9' x 12', 10' x 14', 12' x 15'

DETAIL: Handknotted, fine Tibetan wool with pure Chinese silk, 100 knot, 4mm cut pile construction. Made in Nepal.

SILK CONTENT: 17%

CUSTOM COLOURS AND SIZES AVAILABLE





Who we are. The Art Day Collection explores the best of what Creative Matters has become known for after more than 30 years of creating timeless yet contemporary floor and wallcoverings with interiors professionals worldwide.

Art Day

The Art Day designs emerged from our signature Art Days when the Creative Matters team spends time away from their computers together to develop hand created concepts that pertain to a specific theme or process.

Sustainable Luxury

We assign our designs only to artisans who are true experts. The Art Day Collection was handknotted at a mill in Nepal that we have been working with for over a decade. Everything, the dyeing of the wool, the weaving of the rugs, the finishing is done by hand. As a fair trade licensee of the Swiss based Label STEP we have a long-standing commitment to ethical and sustainable manufacturing.



Shared Values

Our success has been influenced by what we believe and how we work.

CREATIVE – we use our skills and talents to realize inspired designs and luxurious creations.

COLLABORATIVE – we work together with our artisans to achieve the very best result.

METICULOUS – we pay attention to the smallest details and commit to unsurpassed quality and service.

ETHICAL – we make decisions based on mutual respect for each other, our artisans, our clients and the environment.

HONOURABLE – we are open, honest and deliver on our promises.

The Art Day Collection was designed by our team in Toronto and then finessed in collaboration with our artisanal partners in Nepal. Please visit our website to see the other 13 collections.



The Art Day Collection. Delightful interpretations with endless possibilities. Equal parts timeless and modern. Designs transitioning from hand-drawn imagery to precise digital finessing and elevated into handknotted area rugs. Crafted in Tibetan wool with the perfect hint of silk. Contemporary visions with artisanal aesthetic to elevate any space.

Fair Trade is important to us. We are a small team of creative people with families, children and grandchildren. Throughout our firm, we work to trade responsibly and minimize our environmental footprint. Most important in this endeavour is our membership of the Swiss based Label STEP – an international non-profit organization committed to promoting environmentally friendly production methods, improving the working and living conditions of carpet weavers, and fighting child labour.



inspired floor and wallcoverings

CREATIVE MATTERS INC.

532 ANNETTE STREET, TORONTO, CANADA

M6S 2C2 **T** 416.934.9771 **F** 416.934.1528

cmi@creativemattersinc.com www.creativemattersinc.com

Label STEP Partner – Improving the working and living conditions of weavers